



COMMONWEALTH OF KENTUCKY
TRANSPORTATION CABINET

www.transportation.ky.gov/

Andy Beshear
GOVERNOR

Jim Gray
SECRETARY

July 12, 2021

CALL NO. 304
CONTRACT ID NO. 211033
ADDENDUM # 1

Subject: Christian County, FD04 SPP 024 0115 009-010
Letting July 23, 2021

(1) Added - Special Notes - Pages 1-25 of 25

Proposal revisions are available at <http://transportation.ky.gov/Construction-Procurement/>.

If you have any questions, please contact us at 502-564-3500.

Sincerely,

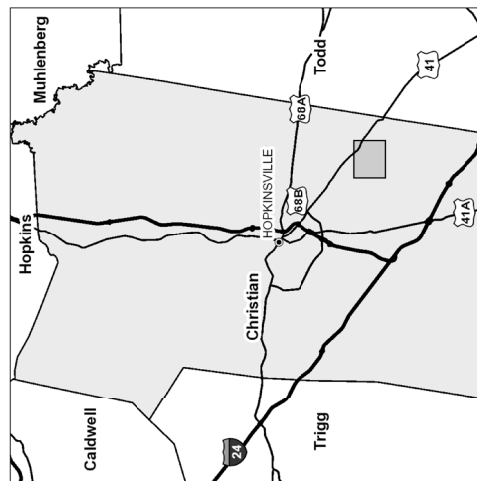
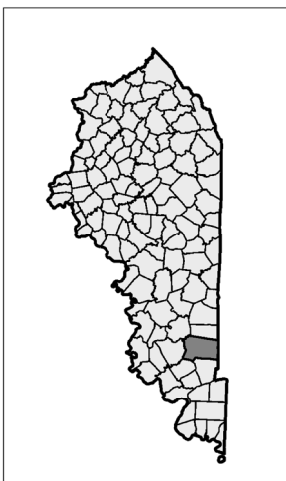
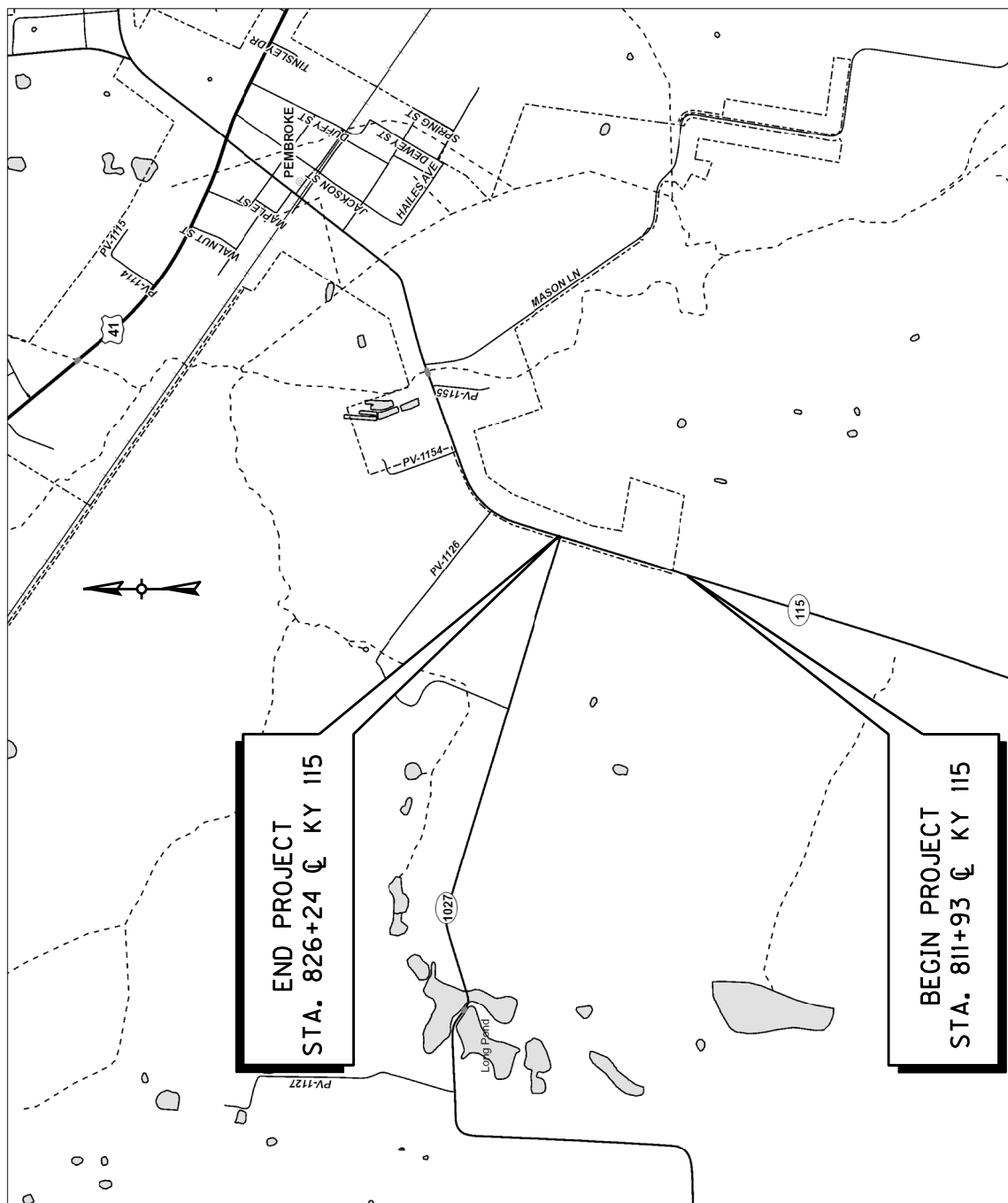
Rachel Mills,

A handwritten signature in black ink that reads "Rachel Mills".

Rachel Mills, P.E.
Director
Division of Construction Procurement

RM:mr
Enclosures

COUNTY OF	ITEM NO.
CHRISTIAN	2-9021.00



TURN LANE AT PEMBROKE ELEMENTARY
LAYOUT SHEET

KY 115

SPECIAL NOTES FOR COMPLETION DATES & LIQUIDATED DAMAGES

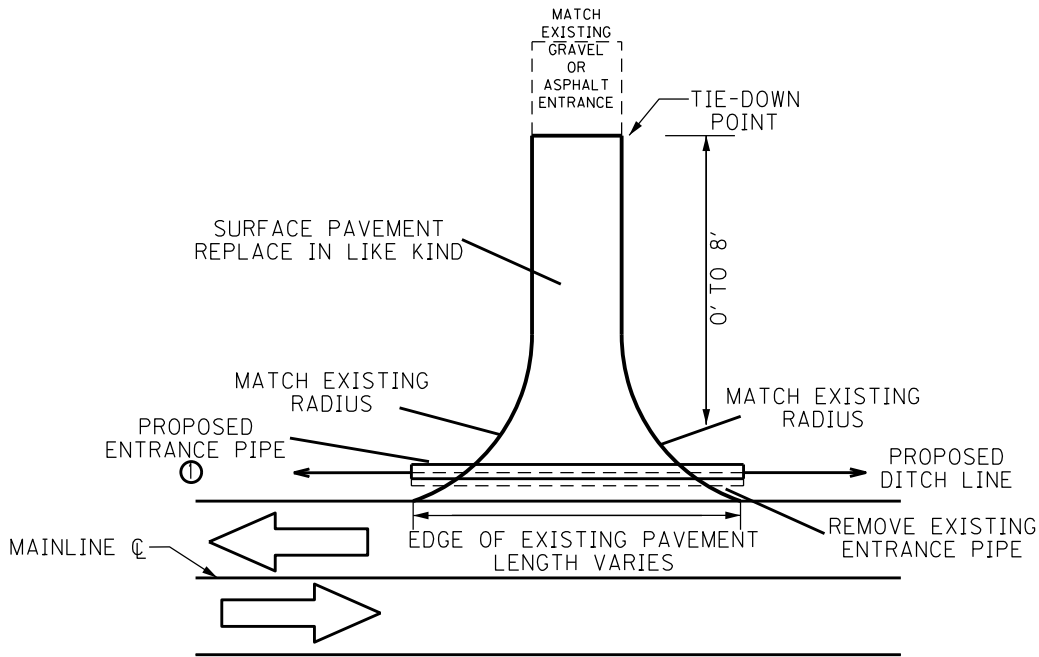
The ultimate fixed completion date for this project will be October 15, 2021. Liquidated Damages for failure to complete the project on time will be assessed following Section 108.09.

COORDINATION OF WORK WITH OTHER CONTRACTS

Be advised, there may be an active project(s) adjacent to or within this project. The Engineer will coordinate the work of the Contractors. See Section 105.06.

1-3193 Coordination Contracts
01/02/2012

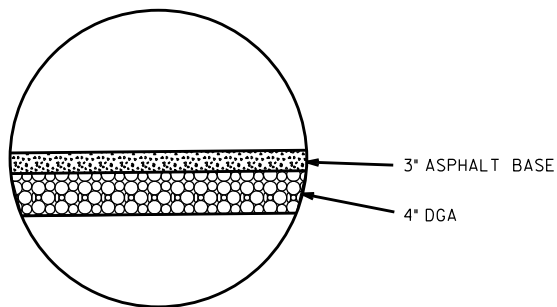
TYPICAL SECTIONS



ENTRANCE DETAIL

NOTES:

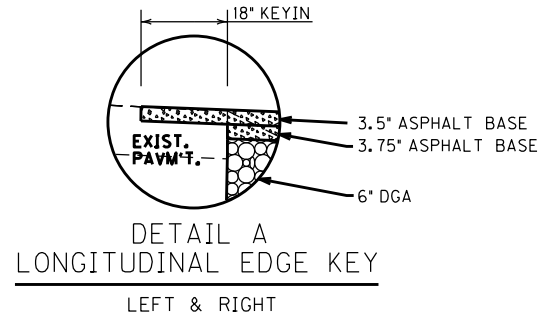
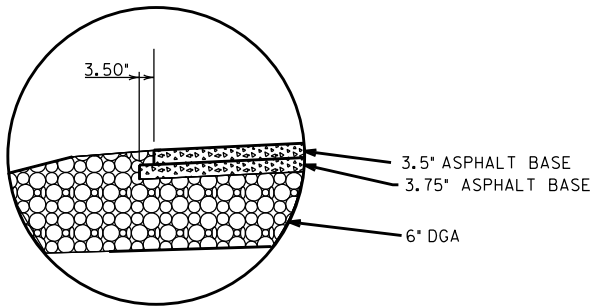
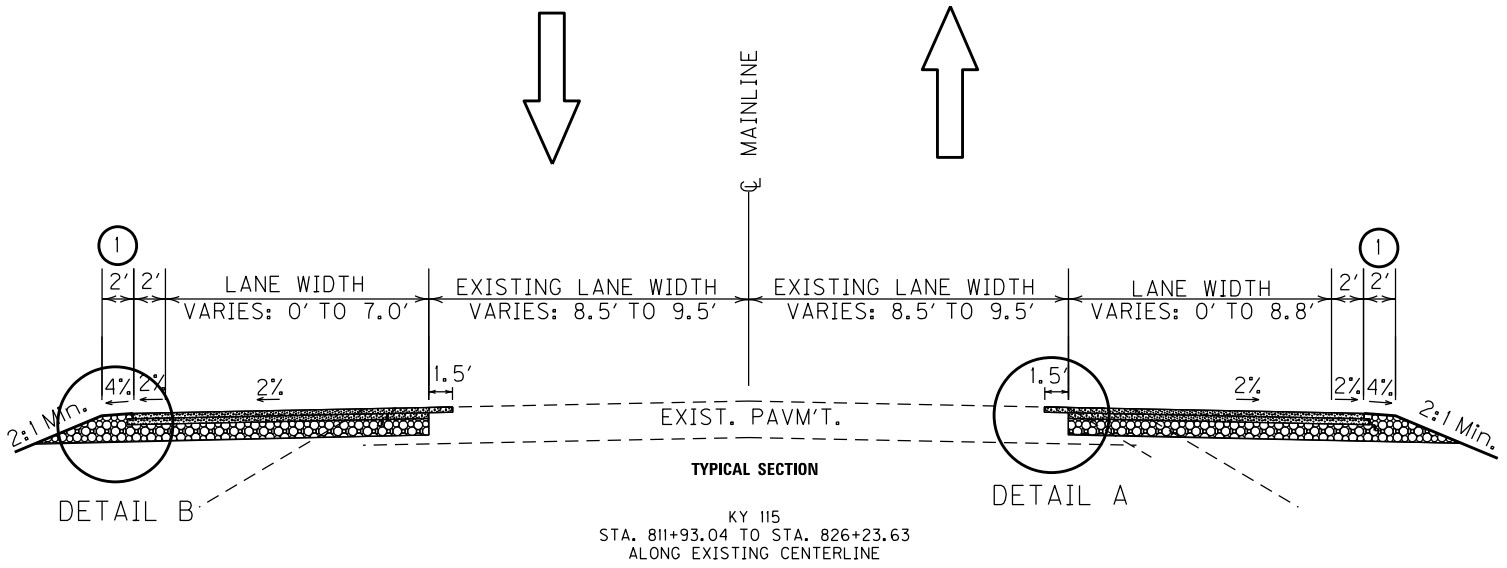
- ① PLACE ENTRANCE PIPE AFTER DITCHING AND SHOULDERING OPERATIONS HAVE BEEN COMPLETED TO LINE UP WITH NEW DITCH LINE.



ASPHALT ENTRANCE
NOT TO SCALE

1100 FD04 024 1320401D		
PROJECT NUMBER:		
KY 115	PEMBROKE-OAKGROVE RD.	
ROUTE NO:	ROAD NAME:	
CHRISTIAN	KENTUCKY	
COUNTY OF:	STATE OF:	
	2-9021	1 OF 2
MILE POINT:	ITEM NO.:	SHEET NO.:

TYPICAL SECTIONS



NOTES:

- 1 A 2' SHOULDER IS DESIRABLE BUT MAY HAVE TO BE NARROWED OR ELIMINATED BASED ON FIELD CONDITIONS AS DIRECTED BY THE ENGINEER.

1100 FD04 024 1320401D		
PROJECT NUMBER:		
KY 115	PEMBROKE-OAKGROVE RD.	
ROUTE NO:	ROAD NAME:	
CHRISTIAN	KENTUCKY	
COUNTY OF:	STATE OF:	
	2-9021	2 OF 2
MILE POINT:	ITEM NO.:	SHEET NO.

GENERAL SUMMARY

NOTES:
 1. ALL QUANTITIES ARE ESTIMATED AND MAY NOT BE COMPLETELY USED.
 2. FOR CONTROLLING DUST CAUSED BY MAINTAINING TRAFFIC.

COMMON EXCAVATION - 1060 CU YD
 EMBANKMENT IN PLACE - 439 CU YD
 TOTAL - 621 CU YD

SCALE: 1"=NTS

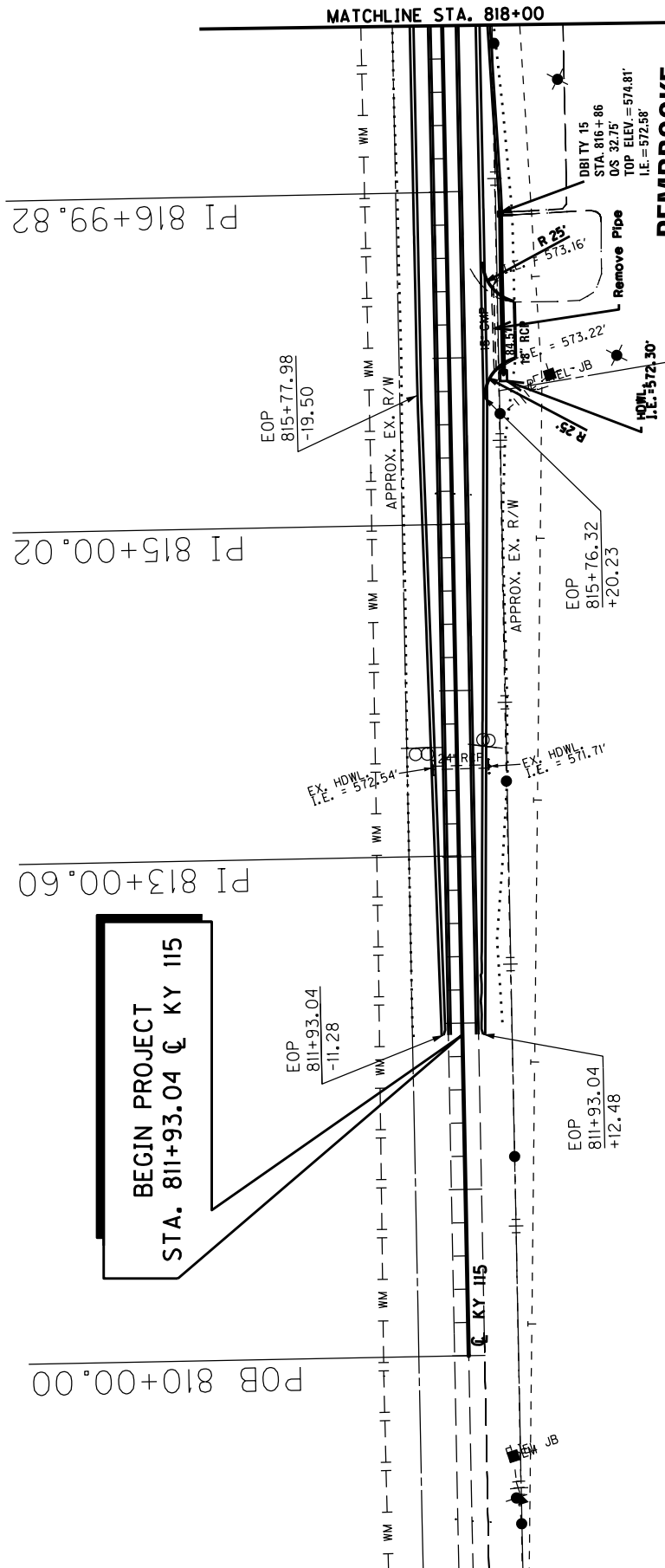
COUNTY OF	ITEM NO.	SHEET NO.
CHRISTIAN	2-9021	SUMMARY

KY 115
GENERAL SUMMARY

ITEM	DESCRIPTION	UNIT	TOTAL PROJECT
212	CL2 ASPH BASE 1.00D PC64-22	TON	1189
1	DCA BASE	TON	1489
100	ASPHALT SEAL AGGREGATE	TON	8
103	ASPHALT SEAL COAT	TON	1
24970EC	ASPHALT MATERIAL FOR TACK NON-TRACKING	TON	5
2200	ROADWAY EXCAVATION	CUYD	1100
2676	MOBILIZATION FOR MILL & TEXT	LS	1
5950	EROSION CONTROL BLANKET	SQYD	3981
5952	TEMP MULCH	SQYD	535
5985	SEEDING AND PROTECTION	SQYD	9537
5963	INITIAL FERTILIZER	TON	0.49
5964	MAINTENANCE FERTILIZER	TON	0.30
2726	STAKING	LS	1
2242	WATER (2)	MGAL	3
5992	AGRICULTURAL LIMESTONE	TON	5.91
522	STORM SEWER PIPE - 18 IN	LF	665
24575ES610	HEADWALL (SLOPED & MITERED CONCRETE FOR 18 IN PIPE)	EACH	3
1580	DROP BOX INLET TYPE 15	EACH	2
2701	TEMP SILT FENCE	LF	1431
2703	SILT TRAP TYPE A	EACH	2
2706	CLEAN SILT TRAP TYPE A	EACH	2
2704	SILT TRAP TYPE B	EACH	2
2707	CLEAN SILT TRAP TYPE B	EACH	2
2705	SILT TRAP TYPE C	EACH	1
2708	CLEAN SILT TRAP TYPE C	EACH	1
1310	REMOVE PIPE	LF	130
2569	DEMOBILIZATION	LS	1
5953	TEMP SEEDING AND PROTECTION	SQYD	9537
2650	MAINTAIN & CONTROL TRAFFIC	LS	1
2671	PORTABLE CHANGEABLE MESSAGE SIGN	EACH	2
21289ED	LONGITUDINAL EDGE KEY	LF	2862
2677	ASPHALT PAVE MILLING & TEXTURING	TON	79
2545	CLEARING AND GRUBBING	LS	1
6514	PAVE STRIPING-PERM PAINT-4 IN	LF	7157
6574	PAVE MARKING-THERMO CURV ARROW	EACH	4

COUNTY OF	ITEM NO.
CHRISTIAN	2-9021.00

810+00
 811+00
 812+00
 813+00
 814+00
 815+00
 816+00
 817+00
 818+00



**BEGIN PROJECT
 STA. 811+93.04 CL KY 115**

**PEMBROKE
 ELEMENTARY SCHOOL**

NOTE: CONTRACTOR WILL NEED TO OBTAIN AND RELEASE
 PERMISSION FROM SCHOOL PROPERTY WHERE LIMITS FALL
 OUTSIDE OF RIGHT-OF-WAY.

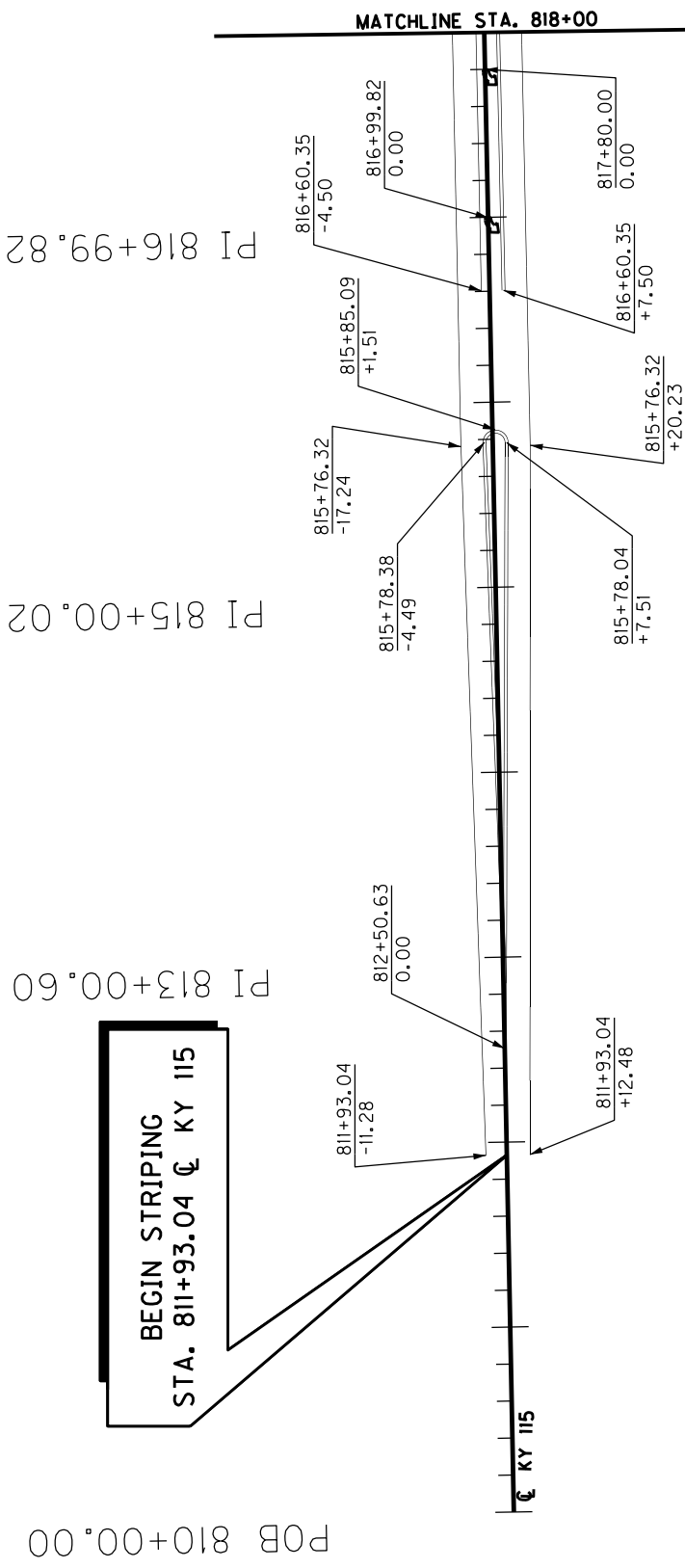
NOTE: LOCATION OF EXISTING UNDERGROUND UTILITIES IS
 APPROXIMATE AND NOT ALL UTILITIES MAY BE SHOWN.
 CONTRACTOR IS RESPONSIBLE FOR VERIFYING LOCATIONS
 WHEN PERFORMING WORK IN THESE AREAS.

PLAN SHEET
 KY 115
 BEGIN PROJECT TO STA. 818+00

SCALE: 1"=100'

COUNTY OF	ITEM NO.
CHRISTIAN	2-9021.00

810+00
 811+00
 812+00
 813+00
 814+00
 815+00
 816+00
 817+00
 818+00



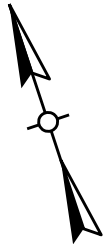
PEMBROKE
ELEMENTARY SCHOOL

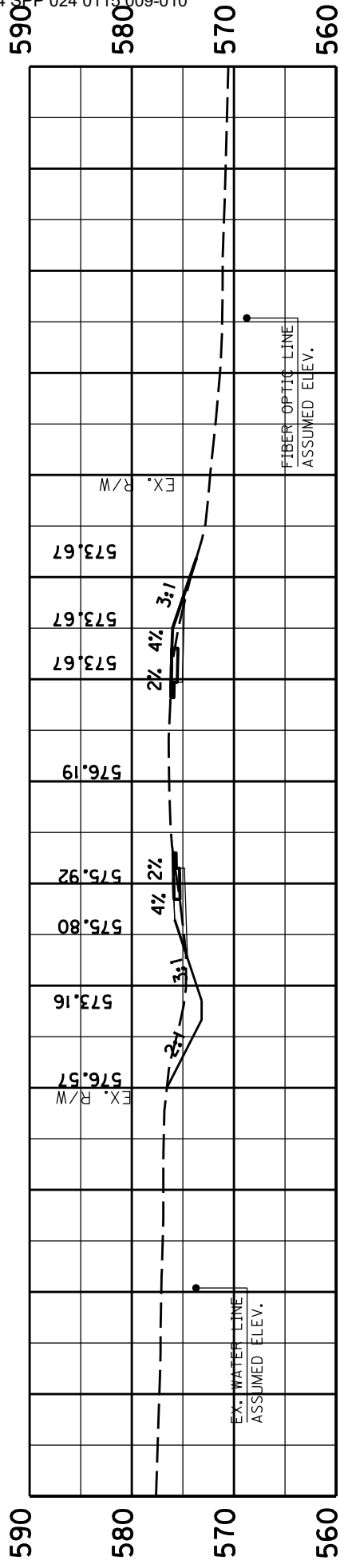
STRIPING		LEGEND
LF	1558	4" YELLOW-DOUBLE
LF	1354	4" WHITE-SOLID
EACH	2	THERMO CURV ARROW

NOTE: STRIPING IS FOR INFORMATIONAL PURPOSES ONLY

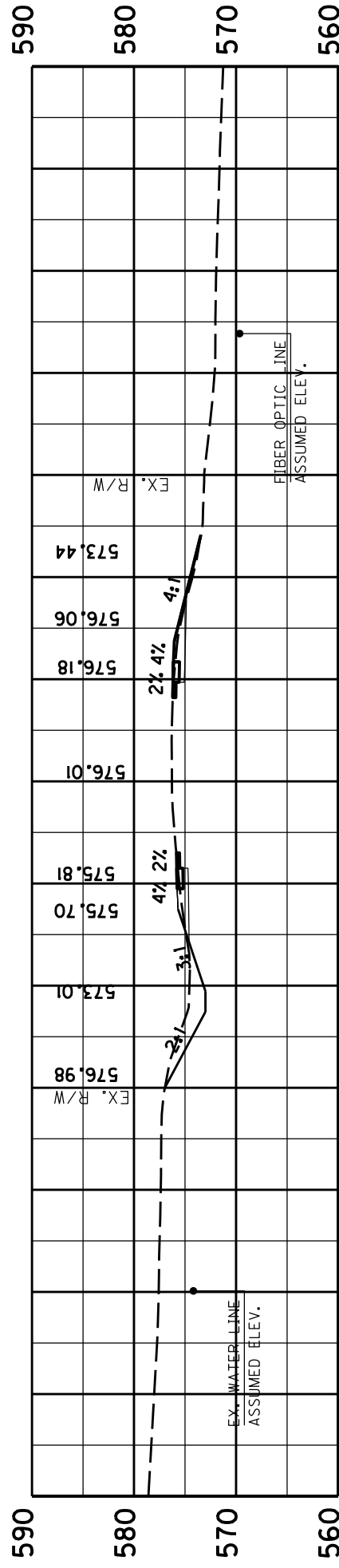
KY 115
 STRIPING PLAN SHEET
 BEGIN STRIPING TO STA. 818+00

SCALE: 1"= 100'





812+50



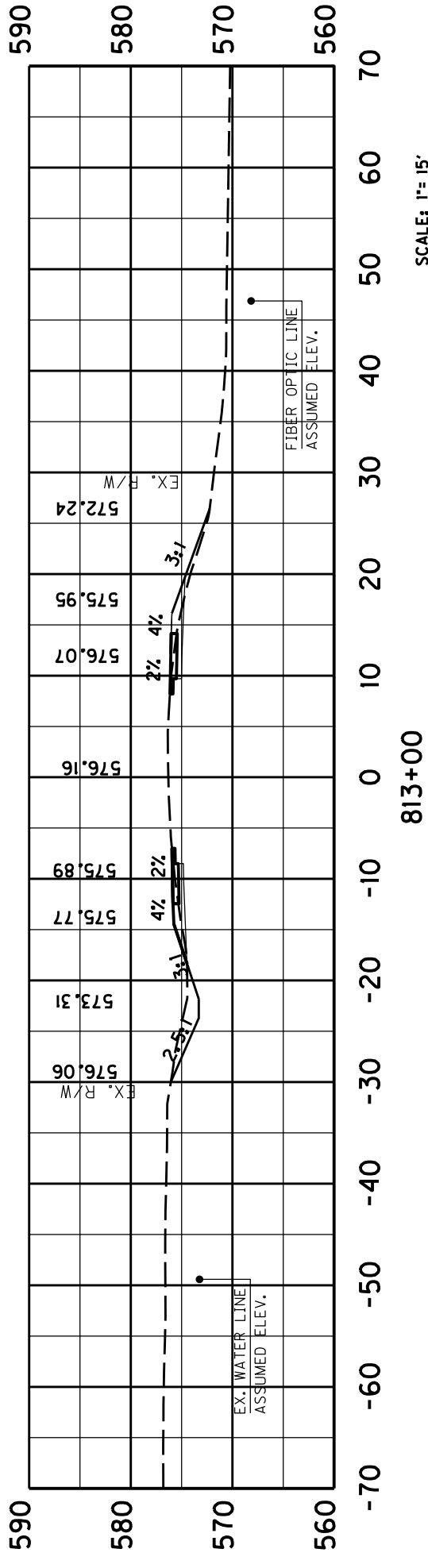
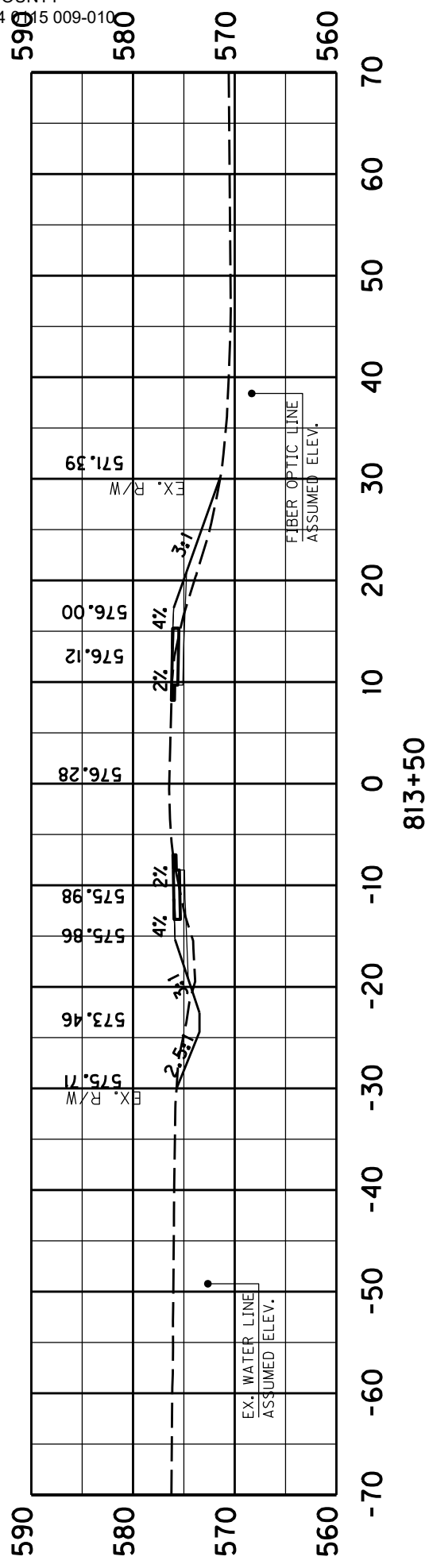
812+00

SCALE: 1" = 15'

COUNTY OF	ITEM NO.	SHEET NO.
CHRISTIAN	2-9021	X1

KY 115

STA. 812+00 TO STA. 812+50

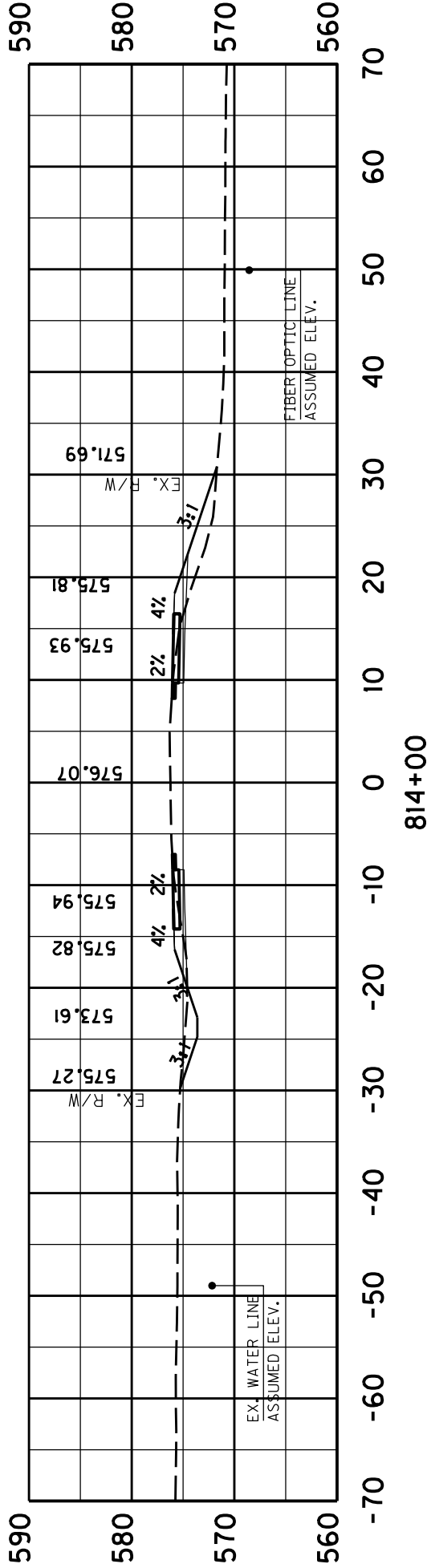
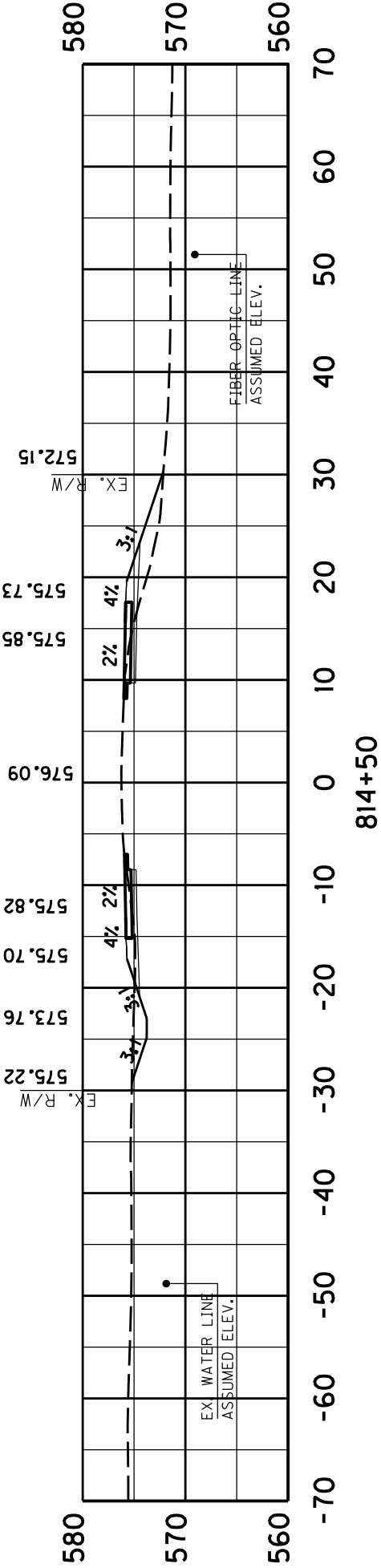


SCALE: 1"= 15'

COUNTY OF	ITEM NO.	SHEET NO.
CHRISTIAN	2-9021	X2

KY 115

STA. 813+00 TO STA. 813+50

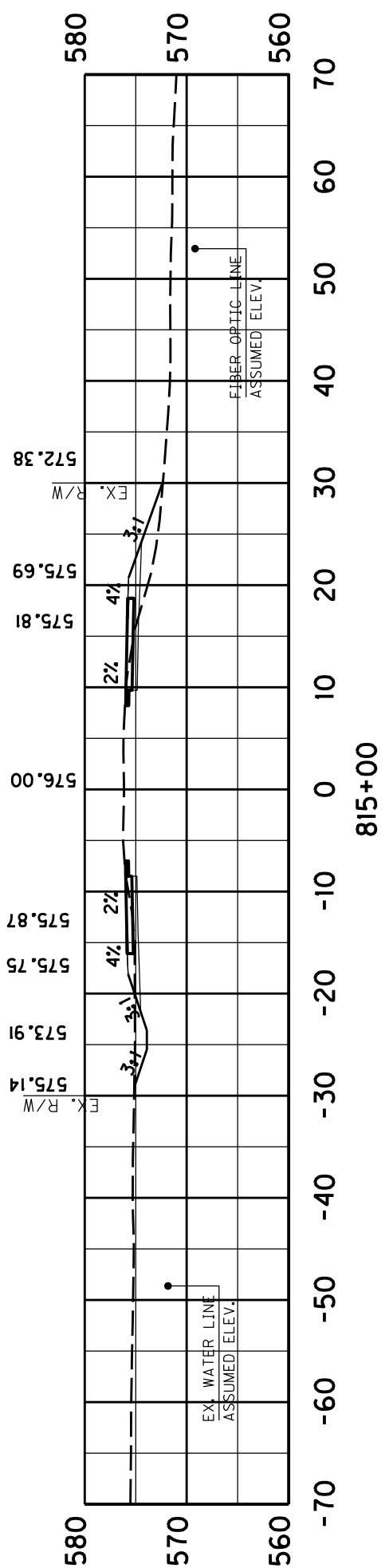
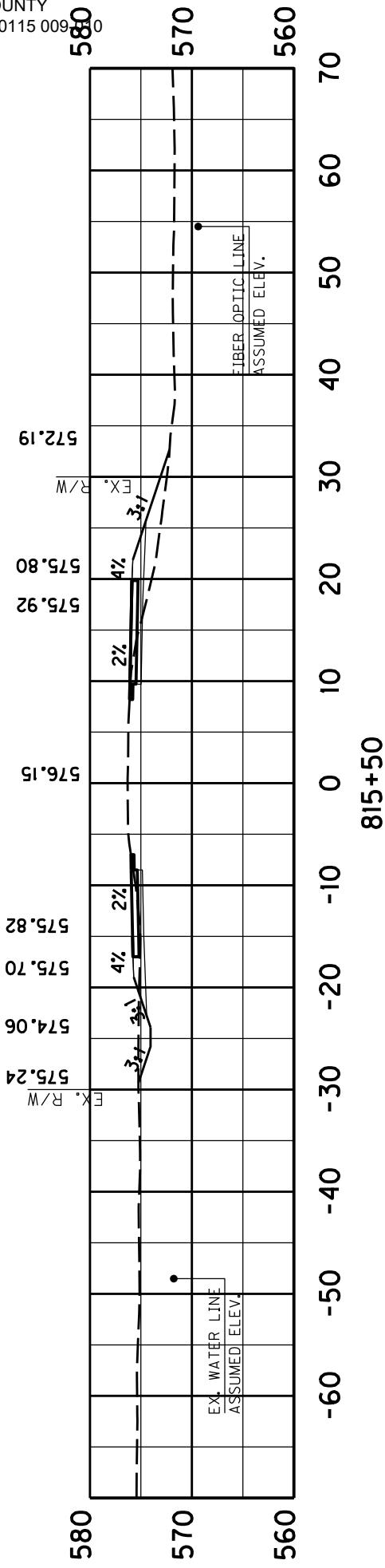


SCALE: 1"= 15'

COUNTY OF	ITEM NO.	SHEET NO.
CHRISTIAN	2-9021	X3

KY 115

STA. 814+00 TO STA. 814+50

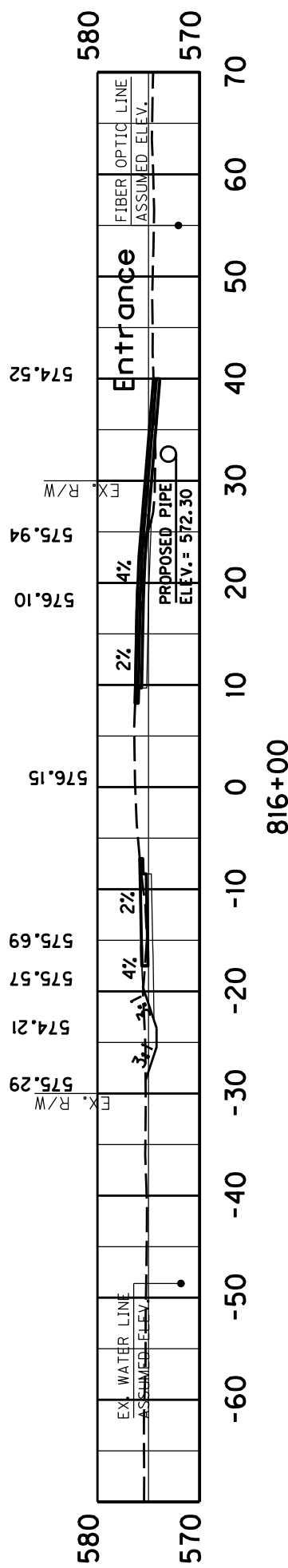
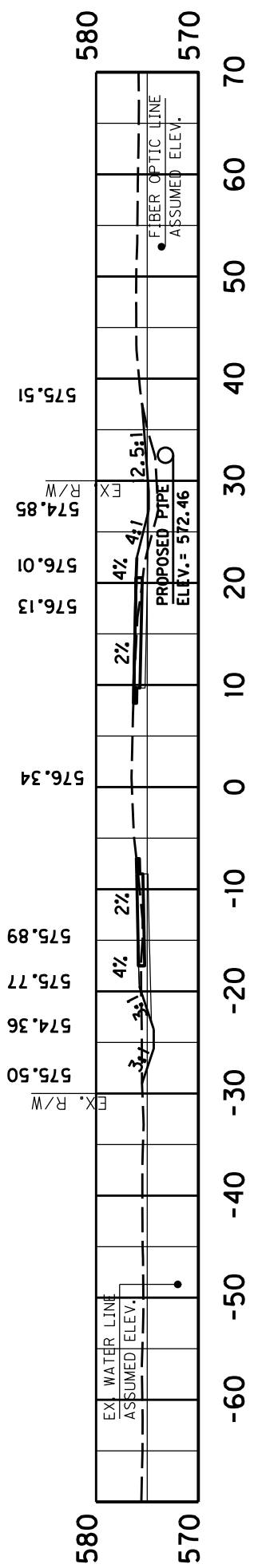


SCALE: 1"= 15'

COUNTY OF	ITEM NO.	SHEET NO.
CHRISTIAN	2-9021	X4

KY 115

STA. 815+00 TO STA. 815+50

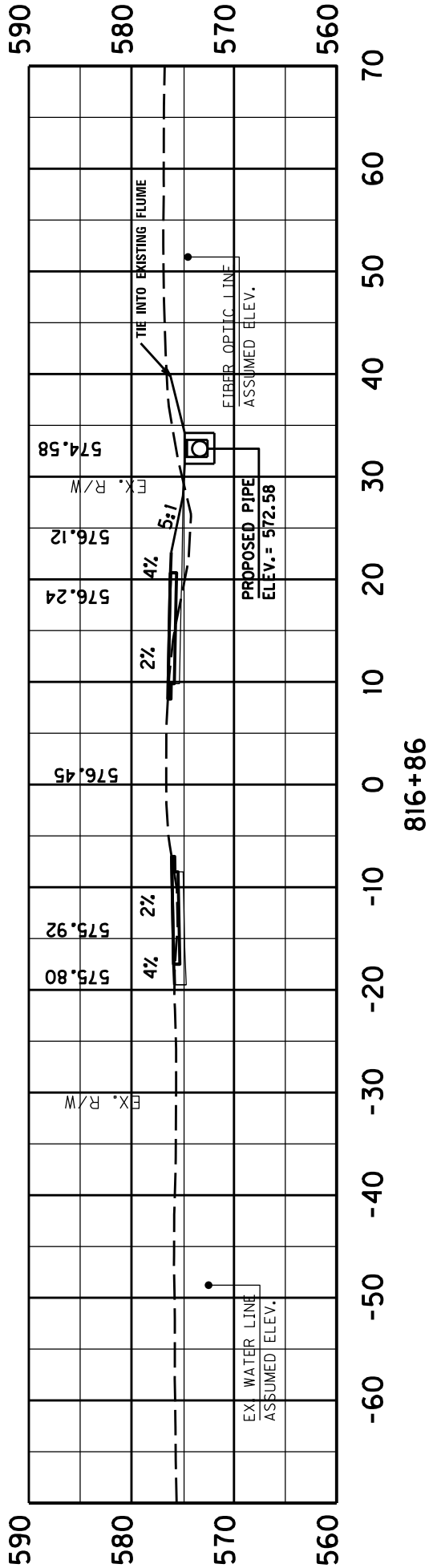
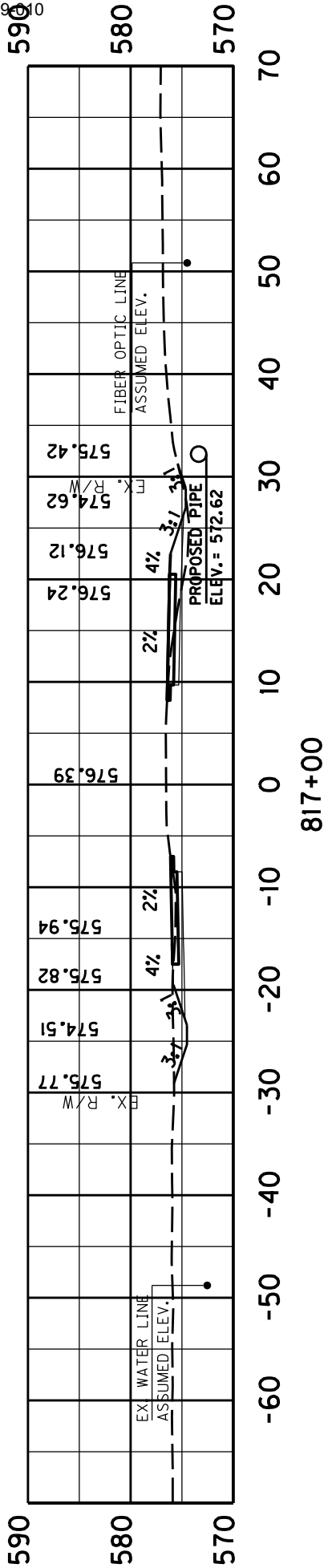


SCALE: 1" = 15'

COUNTY OF	ITEM NO.	SHEET NO.
CHRISTIAN	2-9021	X5

KY 115

STA. 816+00 TO STA. 816+50

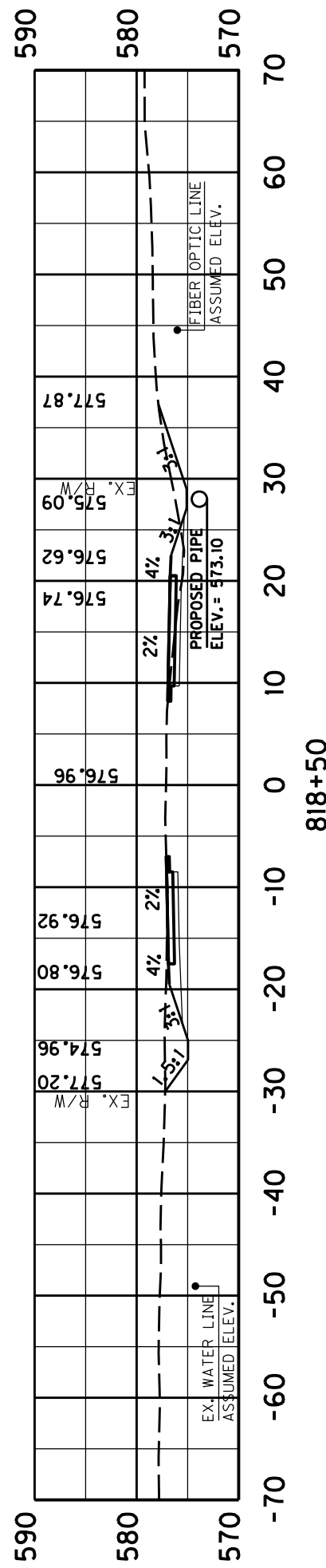
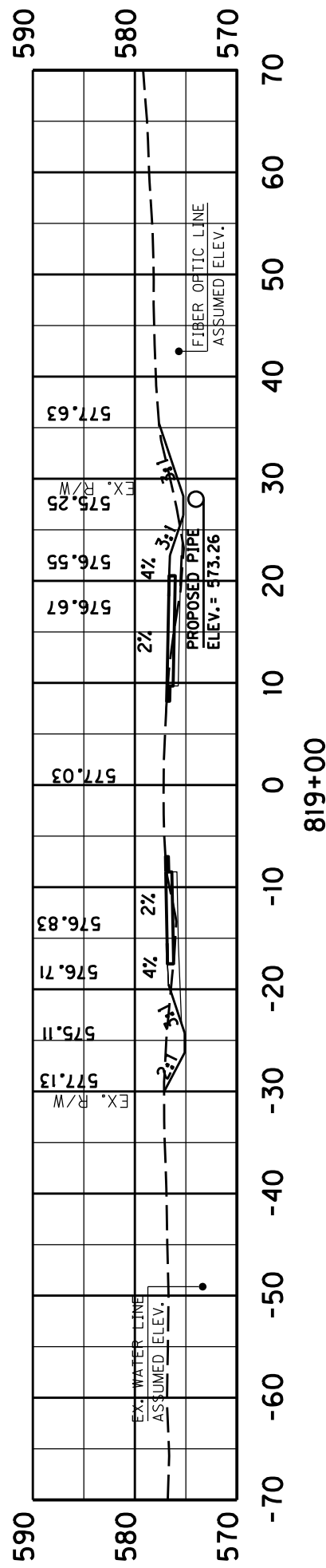


SCALE: 1" = 15'

COUNTY OF	ITEM NO.	SHEET NO.
CHRISTIAN	2-9021	X6

KY 115

STA. 816+86 TO STA. 817+00

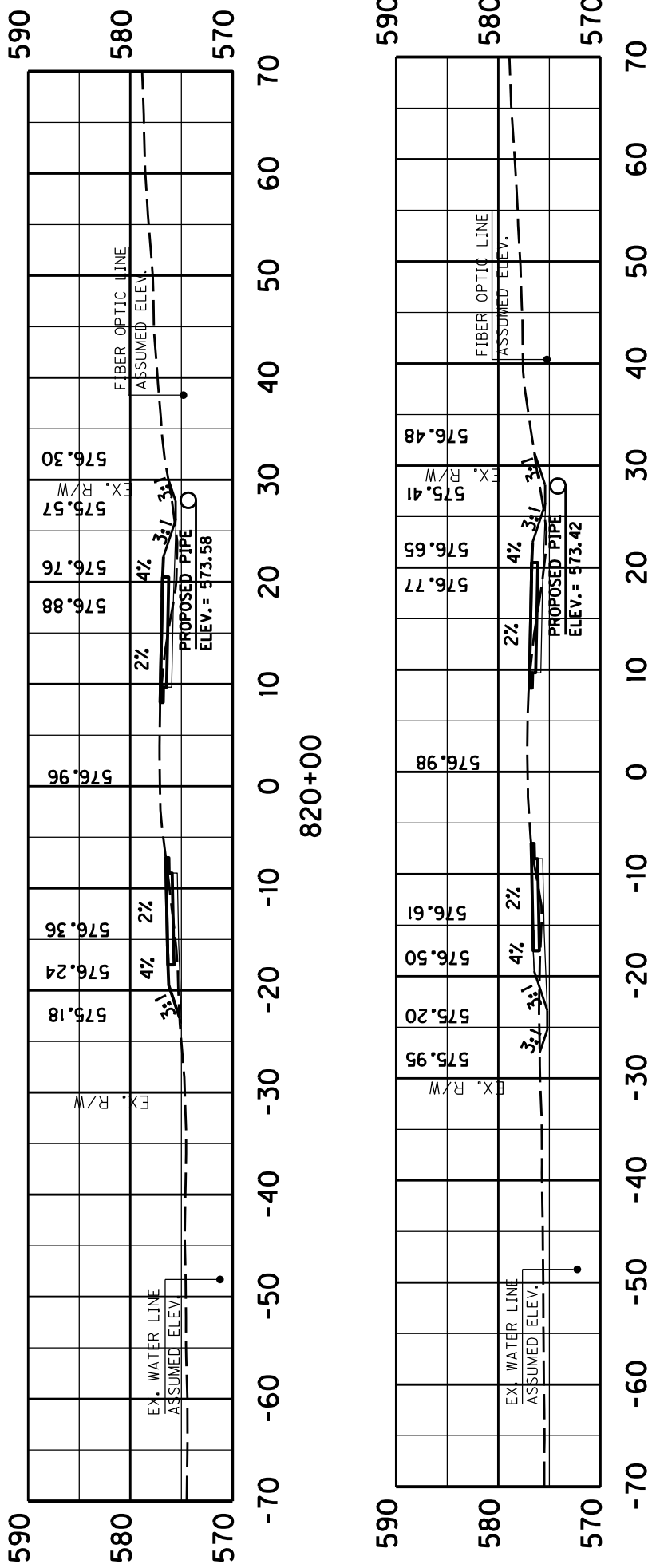


SCALE: 1"= 15'

COUNTY OF	ITEM NO.	SHEET NO.
CHRISTIAN	2-9021	X8

KY 115

STA. 818+50 TO STA. 819+00

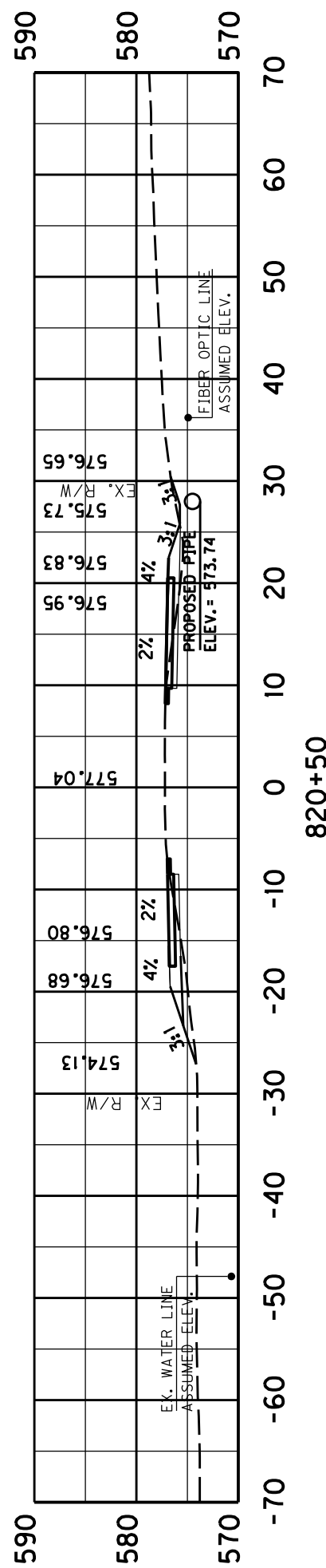
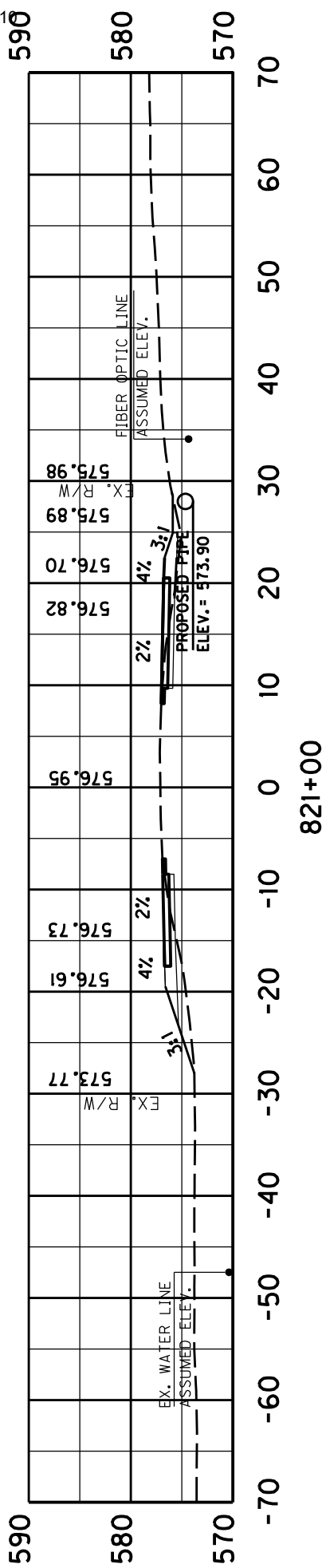


SCALE: 1" = 15'

COUNTY OF	ITEM NO.	SHEET NO.
CHRISTIAN	2-9021	X9

KY 115

STA. 819+50 TO STA. 820+00

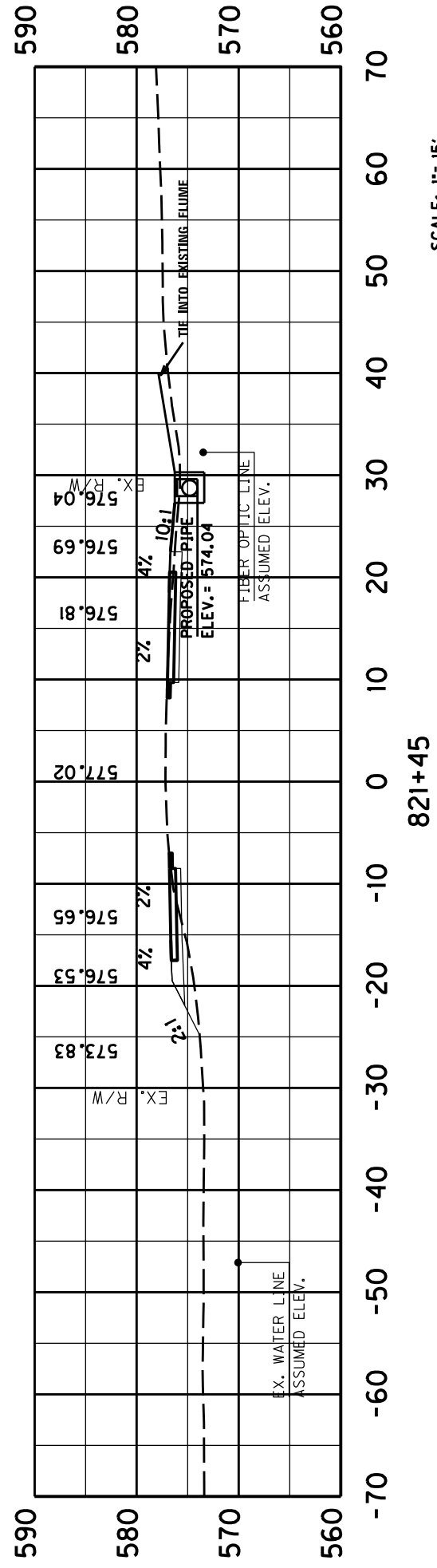
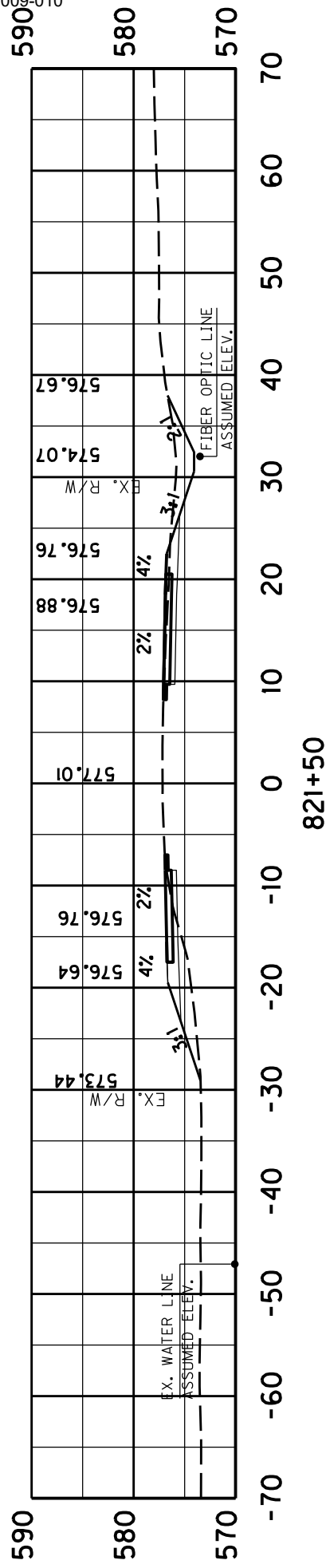


SCALE: 1" = 15'

COUNTY OF	ITEM NO.	SHEET NO.
CHRISTIAN	2-9021	X10

KY 115

STA. 820+50 TO STA. 821+00

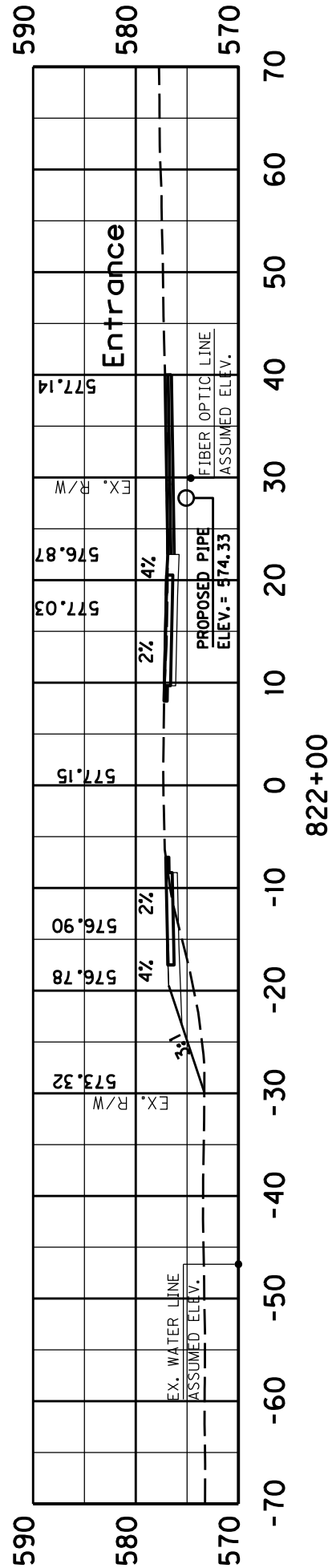
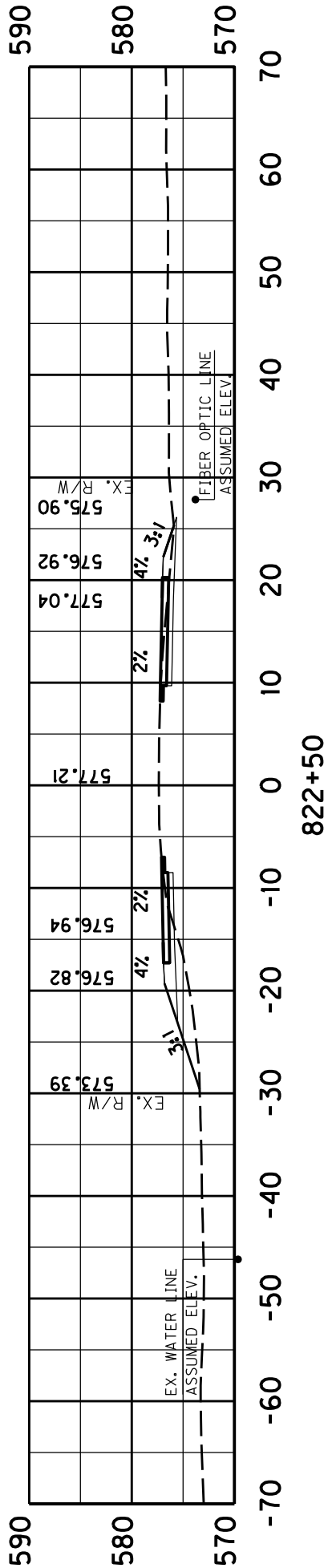


SCALE: 1" = 15'

COUNTY OF	ITEM NO.	SHEET NO.
CHRISTIAN	2-9021	X11

KY 115

STA. 821+45 TO STA. 821+50

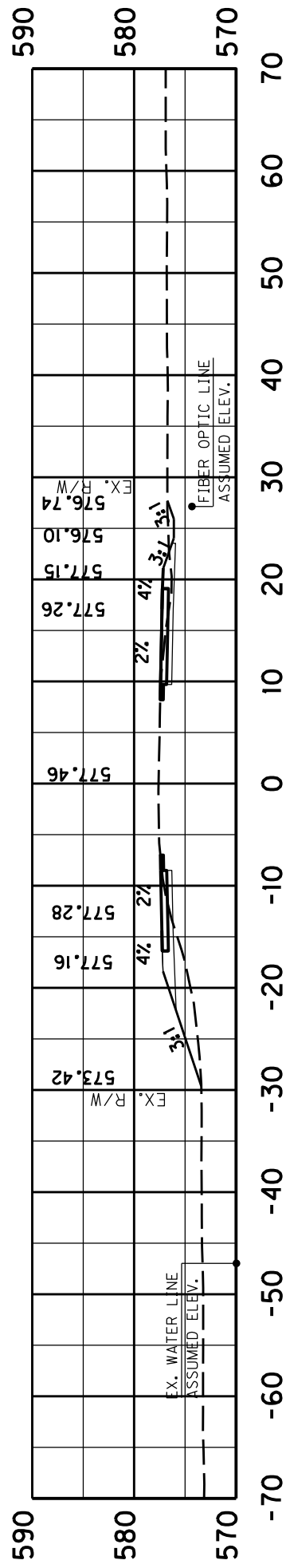
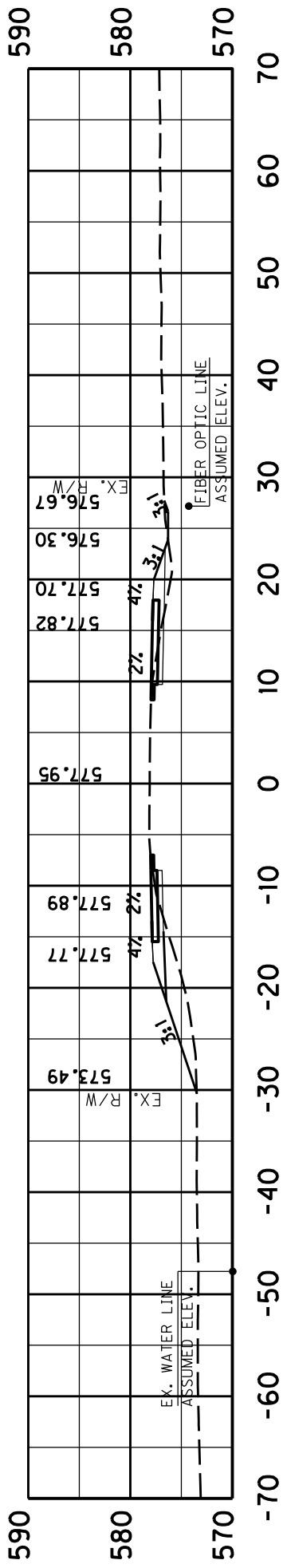


SCALE: 1" = 15'

COUNTY OF	ITEM NO.	SHEET NO.
CHRISTIAN	2-9021	X12

KY 115

STA. 822+00 TO STA. 822+50

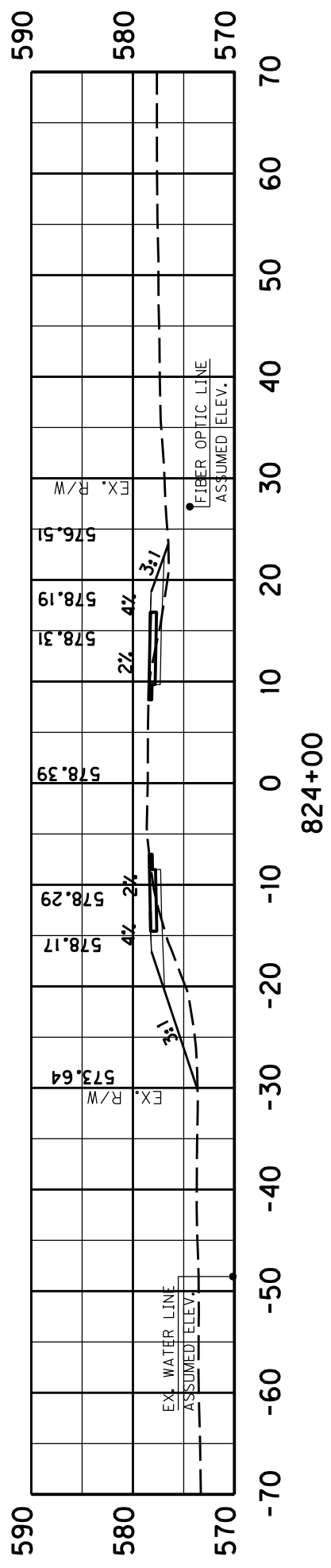
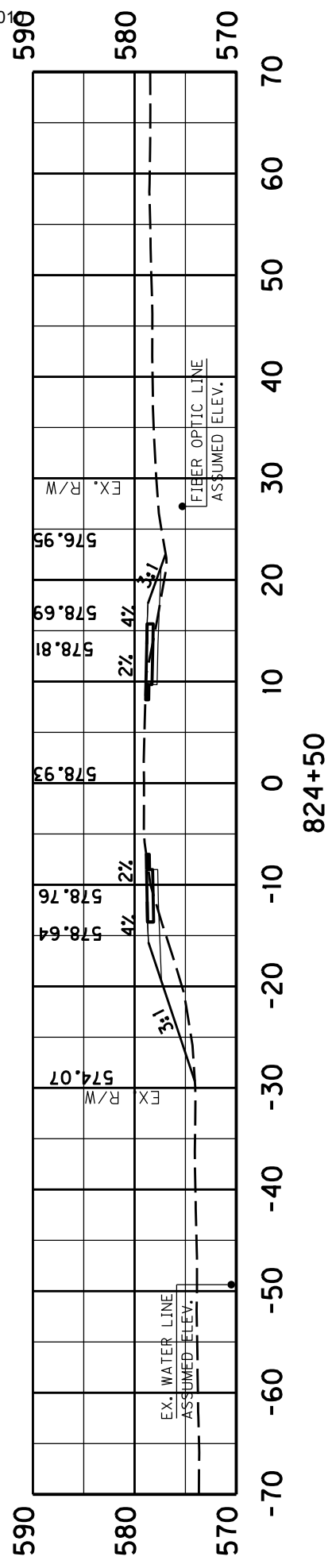


SCALE: 1" = 15'

COUNTY OF	ITEM NO.	SHEET NO.
CHRISTIAN	2-9021	X13

KY 115

STA. 823+00 TO STA. 823+50

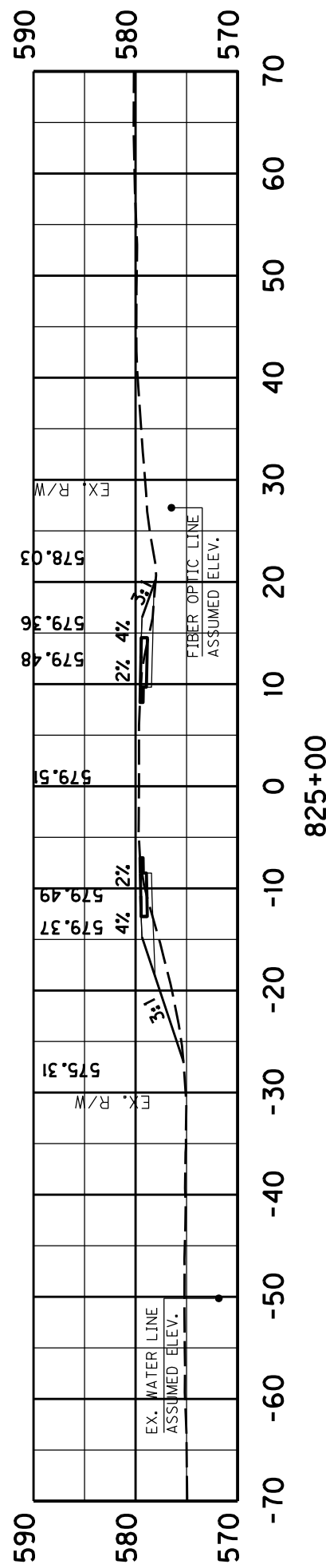
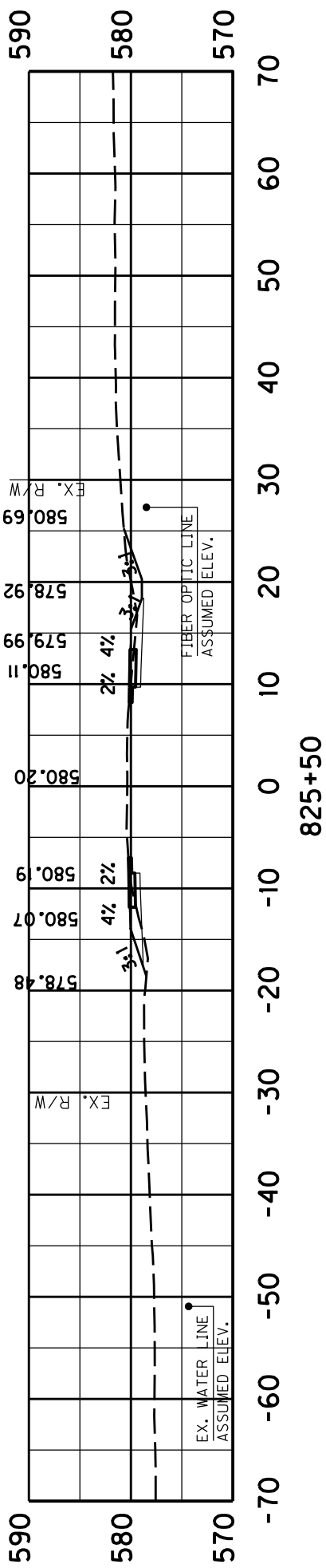


SCALE: 1" = 15'

COUNTY OF	ITEM NO.	SHEET NO.
CHRISTIAN	2-9021	X14

KY 115

STA. 824+00 TO STA. 824+50

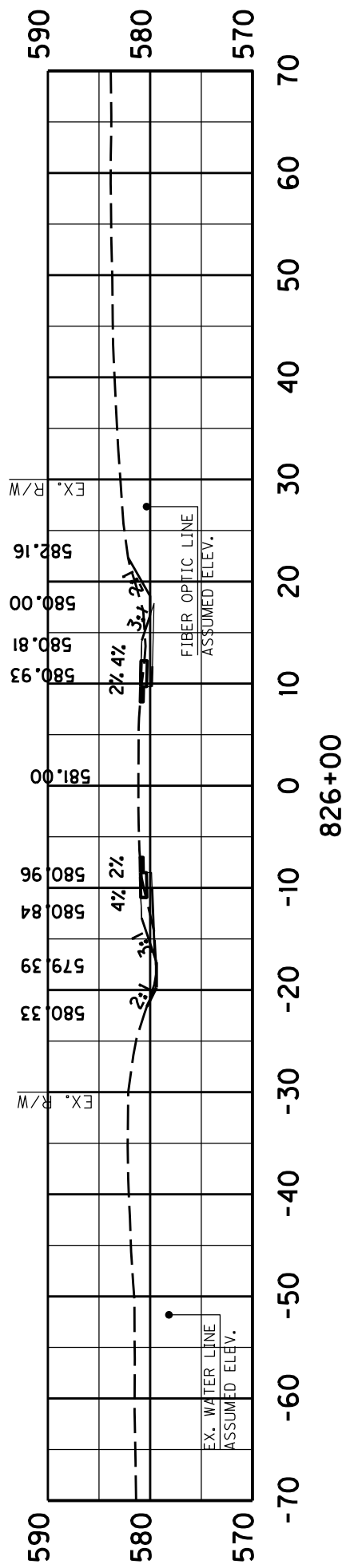


SCALE: 1" = 15'

COUNTY OF	ITEM NO.	SHEET NO.
CHRISTIAN	2-9021	X15

KY 115

STA. 825+00 TO STA. 825+50



SCALE: 1" = 15'

COUNTY OF	ITEM NO.	SHEET NO.
CHRISTIAN	2-9021	X16

KY 115
STA. 826+00